

„There are two things children should get from their parents: roots and wings.“

Johann Wolfgang von Goethe

HÖG FAMILY LIGHTS CHAPEL

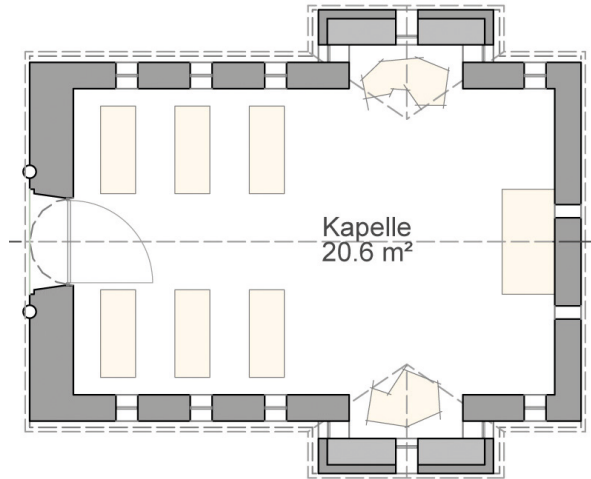


Special care has been taken in the family lights chapel project to focus on the many aspects of the family. This goal is reflected in each of the structural elements and the artistic design of the chapel. The Hög chapel emerged in 2014 as a joint project of architect DI Hubert Lentsch, sculptor Walter File, pastor Willi Pfurtscheller and the Komperdell cable car company, all of whom have put a lot of love and dedication into their meticulous work.

“I'm looking for forms that go together well with each other,” says sculptor Walter File. The interior might perhaps appear sober in the eyes of many viewers. Its deliberately straight lines come from the intention to create a chapel which is open to all denominations and religions.

The ground plan.

Religious buildings are interpreted as places in which a higher power is present. This is why they are colloquially referred to as houses of worship and called churches in what was once known as Christendom, or synagogues in Jewish culture, or mosques in Islam. Taking our Christian culture as our point of departure, we have based the overall ideas behind our design on the Latin cross. From a spatial perspective, the area in front of the altar has been extended, brightened and accentuated through the layout of the ground plan. The fundamentally dominant longitudinal axis of the building has lost its vehemence. The conventional East-West alignment in our culture is intended to reflect the solar cycle and the circle around the sun, from sunrise in the East to sunset in the West.



The windows & the door.

Let there be light!

Light is like fire, a vital phenomenon in each culture. Many lighting elements were fitted in relation to the size of the building where we encounter the family and the many fundamental transformations it has undergone over the course of generations. Lighting apertures symbolise man's stations on the path from birth to death. The entrance door indicates entry into life. Side windows hint at growth and maturation in man's path and stations through life. The lighting on the east wall also evokes feelings of spirituality and offers guidance in regard to a fulfilled life. All the lighting elements consist of handmade enamel glass.



The altar.

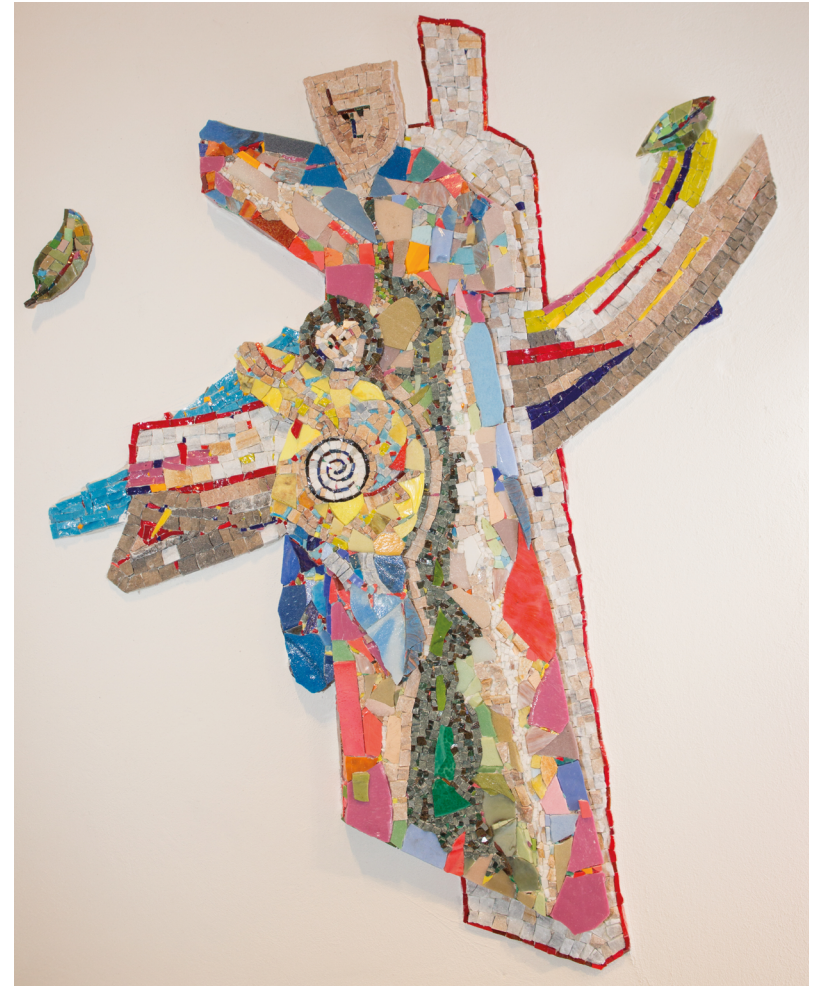
There was once a rock in a lake... the story of the altar might easily start this way. The altar was built from a piece created by Mother Nature in these parts. It had its origins in the excavation of the Hög reservoir before being carefully shaped and given a gloss finish by hand. It formed part of a large rock which had to be detonated in order to obtain smaller stones. The “borehole” on the front of the altar serves as a reminder of this work and has been deliberately left there to reflect the idea that “nothing and nobody is perfect”. Precisely our flaws and imperfections make us uniquely special. With their organic forms, the surfaces of the altar represent the different altitudes of our landscape – the highs of the mountain and the lows of the valley.



The mosaic.

Children play with a “ball” and, symbolically, have tomorrow’s world in their hands. The interplay of light and shade surrounding the family acts as a silent companion, a guardian angel. An abstract representation of the family with a mother, a father and two children is also reflected also on the chapel’s bell. At the same time, the guardian angel symbol can also be discovered in the window elements.

The small arches to the right and left represent the energy which keeps interpersonal relationships going. The leaves above them are a metaphor for the tree of life. The project has chosen to use a combination of local sourced, hand-sculpted natural stones in combination with glass stones.



The stone of light.

A cascaded, hand-beaten piece of granite symbolises the different levels and cascades in the lives of people and nature.



The sound object.

Touch the sound object stone to open up your senses and feel the positive vibrations which have now been released in their entirety. The feeling you get is one of an impulse that characterises the lightness of being and sets your soul free.



The bell.

The bell was cast at the Grassmayr bell foundry in Innsbruck on 17 June 2014 and dedicated to the Holy Family in the Serfaus parish church on 8 September 2014. Attributed to Johann Wolfgang von Goethe, the following quote was cast in the bell: "There are two things children should get from their parents: roots and wings."

Roots: Trees with strong, deep, healthy roots don't topple over immediately with the raging of the first storm. As human beings, we also need such roots to ensure steadfastness in a life based on tradition, enduring values and faith..

Wings: These stand for dreams, visions, goals and plans. They offer us a broad perspective and help us explore new things. Wings carry us out into the universe and allow flights of fancy, while making us aware of our limits.



On behalf of the Komperdell cable car company.

We particularly wanted to offer a sign of gratitude for the many accident-free years and economic success of the entire region.

As a cable car company at a children's and family destination, we have deliberately dedicated this chapel to families. This spiritual place of encounter and of contemplation invites you and your whole family to enjoy a few minutes of peace and quiet, and to regain new strength.

A final word.

We live today in a society in which it is becoming increasingly difficult to live in harmony with the Divine, with nature, with people and with ourselves. So amidst the hustle and bustle of tourism, it is invaluable to have a little oasis where people can go and find some inner peace. All those who come to this colourful space experience a gentle and highly moving form of inner contemplation. This chapel stands out like a little jewel above the newly created "mountain lake", which itself nestles in magnificent mountain scenery and rounds off this wonderful ensemble. I warmly congratulate the Komperdell cable car company on this successful project and wish everyone who prays in this unique chapel luminous moments and encounters both with the Divine and with themselves.

Pastor Mag. Willi Pfurtscheller

Thank you for your support!

**In 2025 we have donated € 12,000,-
to the organisation "Make-A-Wish".**



Since 1997, Make-A-Wish has been fulfilling the heartfelt wishes of seriously ill children between the ages of 3 and 18, providing them and their families with hope, strength, and unforgettable moments, thus giving the children a piece of their childhood back. Thanks to over 140 volunteers, around 100 wishes are granted each year.

Children with life-threatening illnesses often spend many days in the hospital and face significant challenges. Fulfilling a heartfelt wish brings light and joy during this time. The Make-A-Wish team plans every detail to ensure that the young patients have an unforgettable experience.

www.make-a-wish.at

Thanks to your help we were able to benefit numerous societies and non profit organizations in the last few years.

2015 Kinder-Krebs-Hilfe Tyrol	€ 10,000,-
2016 Organisation "Kindern eine Chance"	€ 12,000,-
2017 Father Georg Sporschill's association "Elijah"	€ 12,000,-
2018 "Water for Life" project headed by Caritas	€ 11,000,-
2019 Non Profit Organisation Frizzey Light	€ 12,000,-
2020 Austrian MS foundation	€ 12,000,-
2021 Early Childhood Support Centres in Landeck & Imst ("Lebenshilfe Tirol")	€ 12,000,-
2022 Association Kinderbühne Tirol	€ 12,000,-
2023 DEBRA Austria	€ 11,500,-
2024 Renovation of the Serfaus pilgrimage church	€ 15,000,-

*In 2026, every lit candle will benefit
the organization „Kinderhände”.
Thank you very much for that!*

The association „Kinderhände“ is a non-profit organization that holds an annual meeting for families with children who have hand malformations. Specially trained doctors support affected families from birth, advise them on suitable therapies and plan necessary surgeries together with the parents.

The association's goal is to enable these children to lead independent lives and to provide their families with medical, psychological, and financial support. „Kinderhände“ often covers the cost of aids such as splints, custom-made prostheses, or therapeutic devices that are not fully covered by health insurance.

